

*PeopleSoft Project Costing
and Workflow at TransUnion*

Millie Babicz, SpearMC Consulting

Booth #308

Agenda

- Company Overview
- Objectives
- PC Project Review
- Workflow Project Review
- Q & A

Who is SpearMC?

- SpearMC is a full-service consulting and technology services firm.
- We focus on Oracle/PeopleSoft suite of applications.
- The company was founded in 2001 by KPMG / BearingPoint alumni

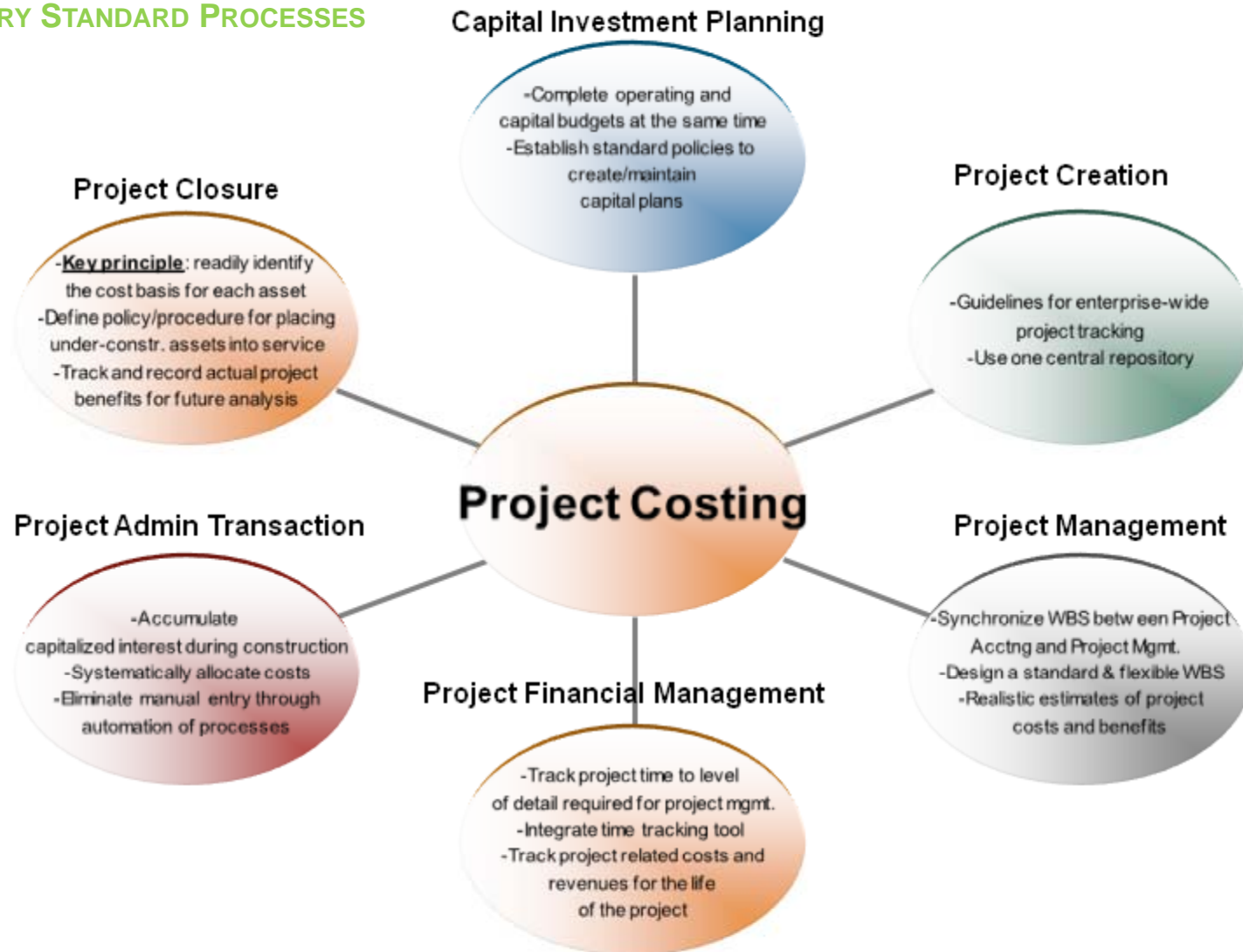
Who is TransUnion?

- A global leader in credit and information management
 - Founded in 1968
 - Headquartered in Chicago
 - Provides solutions to more than 50,000 businesses worldwide
 - Reaches businesses and consumers in 25 countries on 5 continents
 - Maintains credit histories on an estimated 500 million consumers around the globe

Today's Objectives

- Review how TU used the core project costing module with no customization
- Provide overview of custom workflow processes TU design for projects
- Provide overview of all HR, Time, GL, AP, PO and AM interfaces

INDUSTRY STANDARD PROCESSES



Business Requirements

- Capitalize internally developed software projects
- Track research and development costs
- Actual vs Budget reporting at a project level
- SOX compliance
- Flexibility in determining asset capitalization
- Reliable, auditable data that provides the ability to track work efforts across lines of business / segments

PHASED APPROACH



Pre-Implementation

- Identify "quick wins" to alleviate pain points within Finance, such as--
 - Cap # functionality in AM
 - Enter completed projects stored offline into AM & have PS calculate depreciation

Phase I:

- Pilot one project types (Internally Dev Software)
- Implement project level budgeting capture
- Base functionality configured

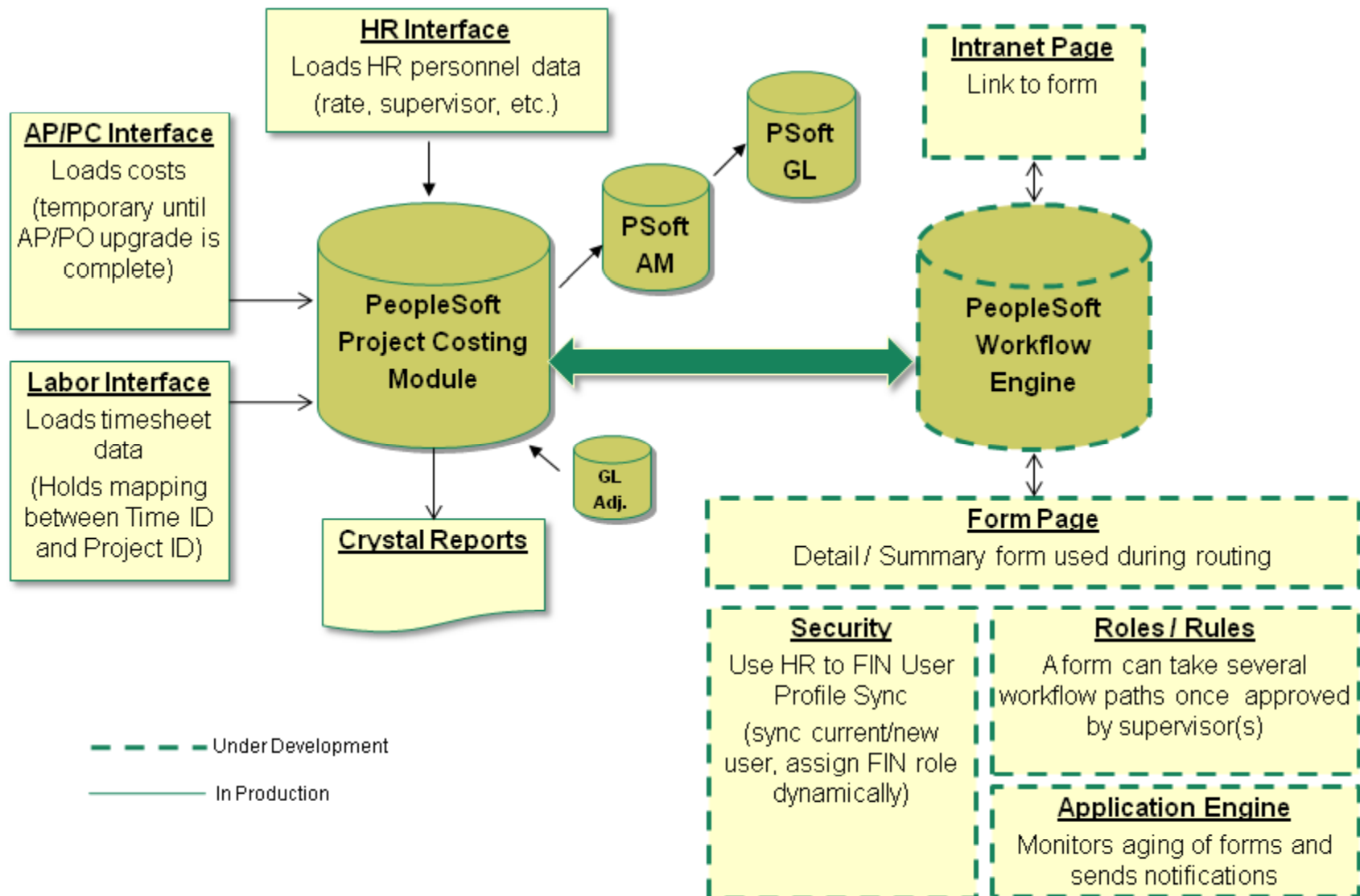
Phase II:

- Scope requirements for an automated budget spending control mechanism.
- Roll-out functionality and design business process to replace current system
- All projects impacting 2008 budget in PeopleSoft

Phase III:

- Consolidate all project-based financial systems into PeopleSoft Project Costing platform.
- Enable workflow
- Convert historical projects

SOLUTION OVERVIEW

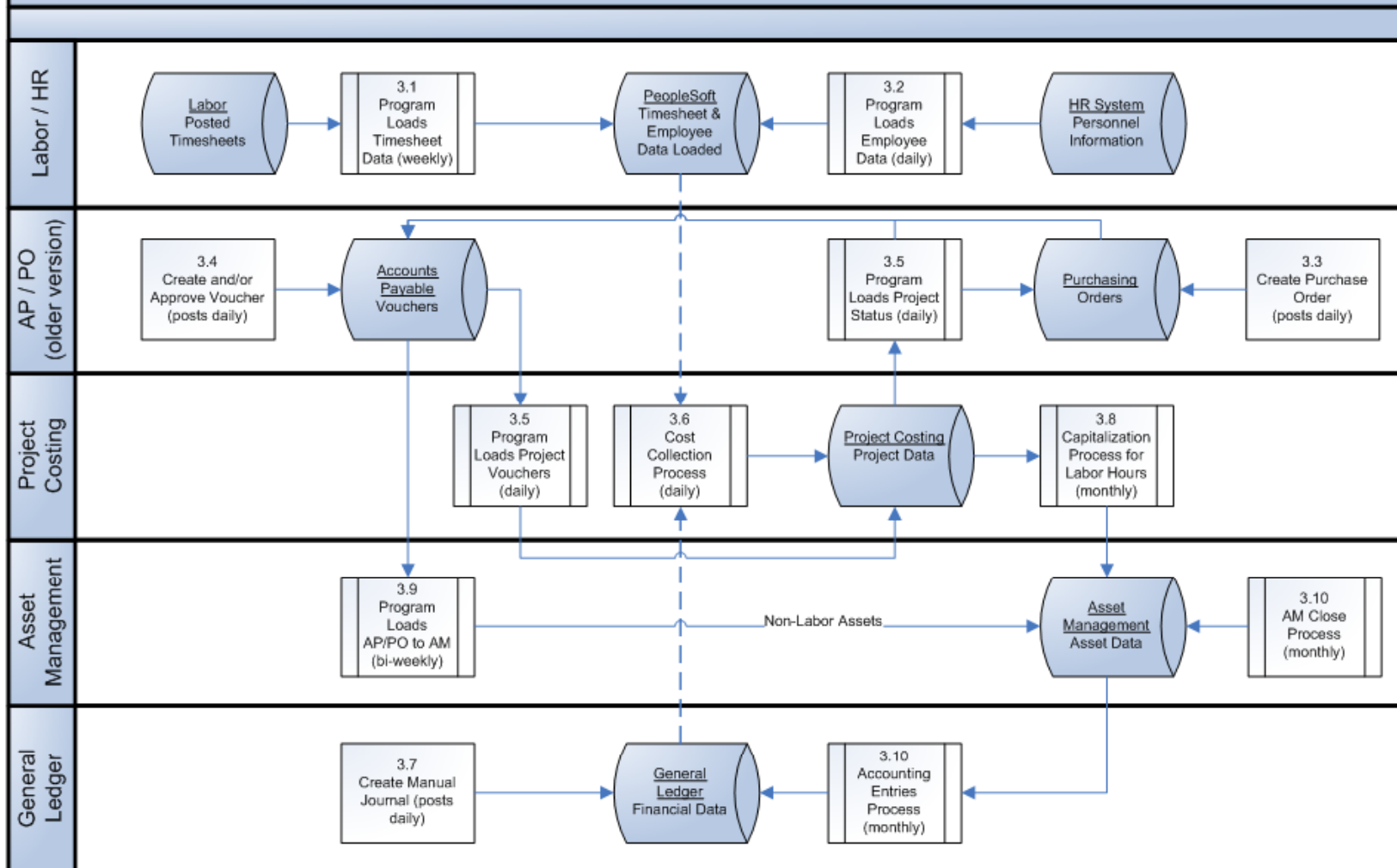


PROJECT COSTING OVERVIEW

Project Setup

- Add to Project Costing
- Add to project tree
- Assign standard activities
- Create budget plan
- Setup express capitalization

3.0 Capture Project Costs



Custom Crystal Reports

Budget&Actual -by Cost Type											Report ID:	TUPC0004
Tree Node: CTOADMIN											As of Date:	2/11/2008
From Date: 1/1/2007 To Date: 12/31/2007												
Project	HW Cap	SW Cap	EXIDS	INIDS	Other Cap	HW Maint	SW Maint	Contract Labor	Other OpEx	Elim	Undefined	TOTAL
663_SOLTESTSRVCS												
OTHER_PROJ												
0045 TU Direct												
BUDGET	0	0	0	0	0	0	0	0	0	0	0	0
ACTUAL	0	0	0	0	0	0	0	0	0	0	0	0
VARIANCE	0	0	0	0	0	0	0	0	0	0	0	0
0046 TU Channels												
BUDGET	0	0	0	0	0	0	0	0	0	0	0	0
ACTUAL	0	0	0	0	0	0	0	0	0	0	0	0
VARIANCE	0	0	0	0	0	0	0	0	0	0	0	0
0047 TU Canada												
BUDGET	0	0	0	0	0	0	0	0	0	0	0	0
ACTUAL	0	0	0	0	0	0	0	0	0	0	0	0
VARIANCE	0	0	0	0	0	0	0	0	0	0	0	0
963_CTO_ADMIN												
SCORING_SERVICE												
0070 CONS												
BUDGET	0	0	0	0	0	0	0	0	0	0	0	0
ACTUAL	0	0	0	0	0	0	0	0	0	0	0	0
VARIANCE	0	0	0	0	0	0	0	0	0	0	0	0

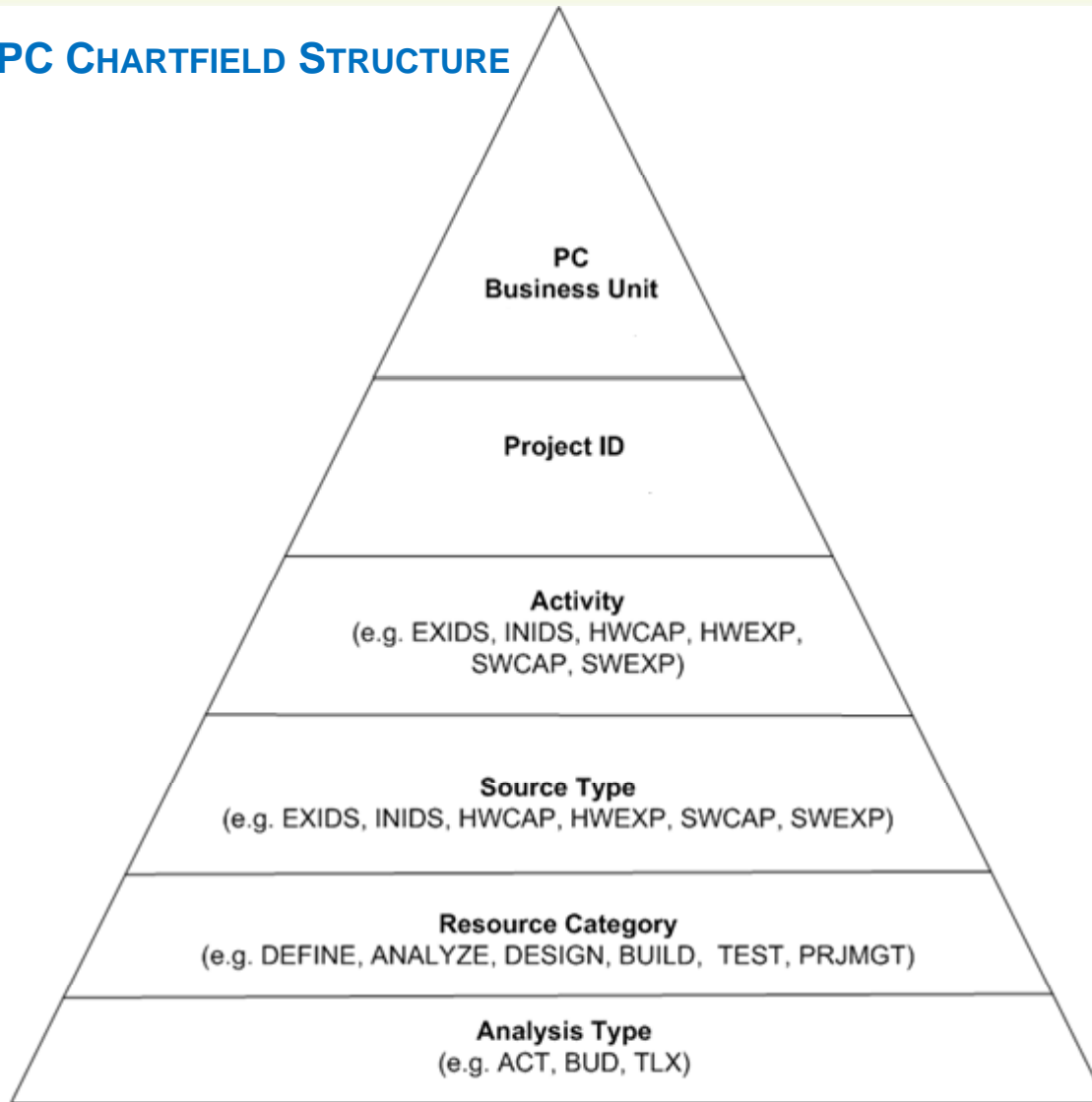
Requested Enhancements from Oracle

- Post separate credit/debit account from AM to GL
 - The transactions passed from PC into AM and then GL always post the debit/credit amount to the same set of chartfields except account.
 - Need to post the debit to one DEPTID and the credit to another DEPTID.
- Enhance AM Distrib Line table
 - Need to have all Project Costing chartfields available on table so that it can get passed to GL.

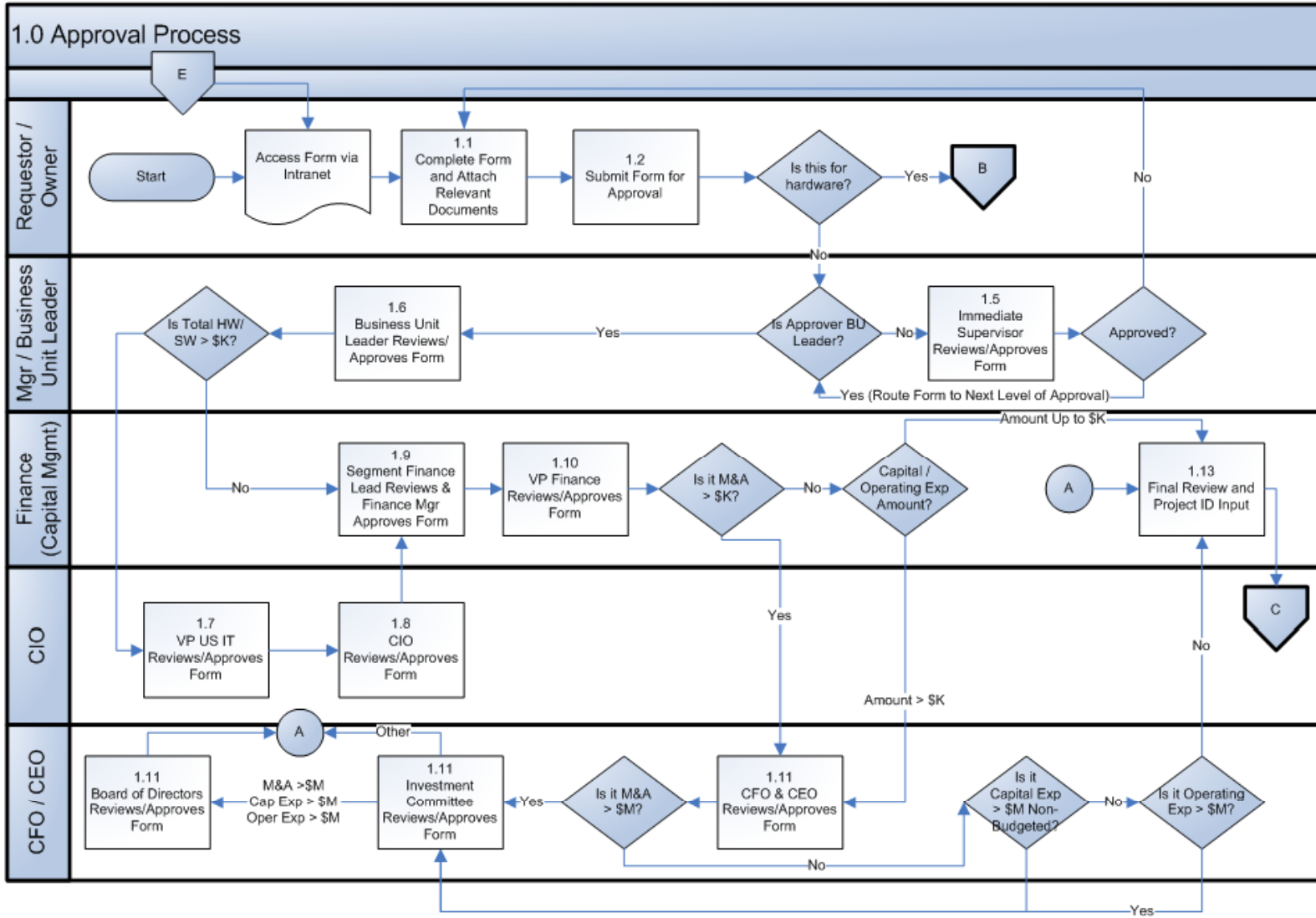
Requested Enhancements from Oracle

- Assign Asset ID at the Resource Level
 - You are only allowed to attach an Asset ID to an Activity.
 - Need each Resource Type to have a different Asset ID.
 - For example, cost captured as Hardware Capital should have their own Asset ID and cost captured as Software Capital should have their own Asset ID.

PC CHARTFIELD STRUCTURE



WORKFLOW OVERVIEW

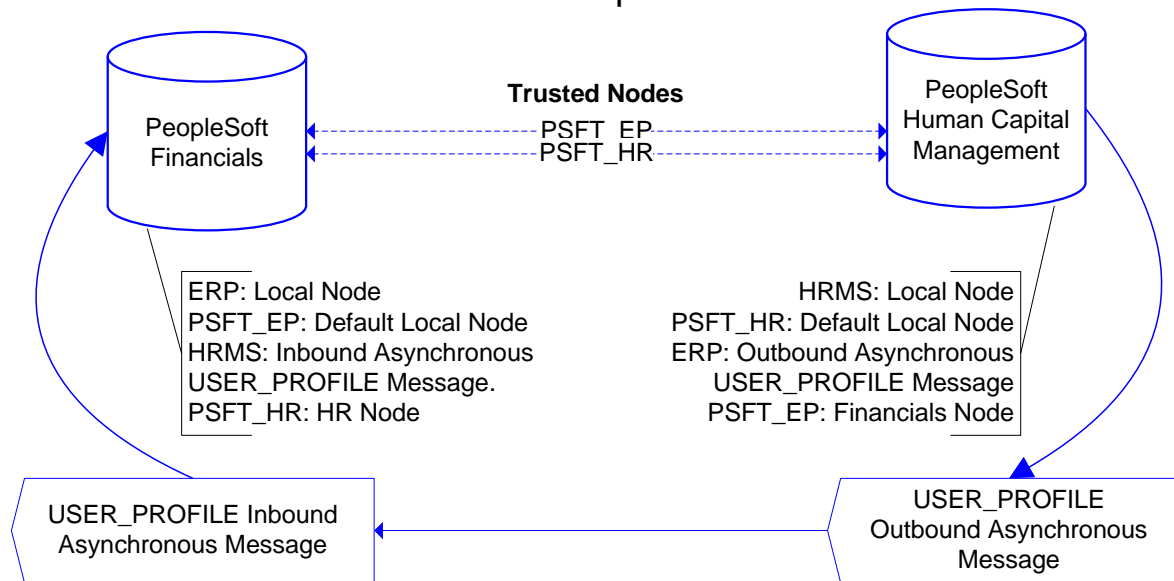


Program flow

- Staff accesses form from Intranet
 - authentication enabled thru security profile sync
- Form is routed to supervisor
 - personnel data available thru HR sync
- Email notification links to worklist
- Aging notifications thru email
 - Supported by app engine

Use Delivered App Messaging

User Profile Synchronization between PeopleSoft Financials and PeopleSoft HCM



REQUEST FORM

[Home](#) | [Worklist](#) | [MultiChannel Console](#) | [Add to Favorites](#)

Details | **Summary**

* Tracking ID

Project Number

*Project Name

Total Funding Request

*Classification

*Capital Expenditure Plan Year

Division

For International Only

*Operating Expense Plan

*Org ID

USD Total

*Department

Currency Rate

Details

Expense Type | [Amount/Currency](#) |

	*Expense Type	*Description	Expense	*Fiscal Year		
1	<input type="text" value="Hardware Capital"/>	<input type="text" value="Servers"/>	Capital	<input type="text" value="2008"/>	<input type="button" value="+"/>	<input type="button" value="-"/>
2	<input type="text" value="Software Capital"/>	<input type="text" value="Operating System"/>	Capital	<input type="text" value="2008"/>	<input type="button" value="+"/>	<input type="button" value="-"/>
3	<input type="text" value="Other Operating Expense"/>	<input type="text"/>	Operating	<input type="text" value="2008"/>	<input type="button" value="+"/>	<input type="button" value="-"/>

Attachments

[Attached File](#)

1 Case_Budget_Plan_Page.doc



Approvals

Name	Description	Date
1		

QUESTIONS?

VISIT OUR BOOTH #308

SpearMC Education Sessions:

- Now that SOX is behind us. What about SAS70?
 - Session 52070 on Thursday 12/4/08
 - Utopia D from 8:30 – 9:30
- Project Costing and Workflow at Transunion
 - Session 51850 on Thursday 12/4/08
 - Nirvana B from 1:30 – 2:30
- Advanced PeopleSoft Financial Security Reporting
 - Session 52060 on Friday 12/5/08
 - Nirvana B from 8:30 – 9:30

Contact Information

- Marcus Bode, Principal
mbode@spearmc.com
- David Pigman, Tech Specialist
dpigman@spearmc.com
- Millie Babicz, Financials Specialist
mbabicz@spearmc.com